

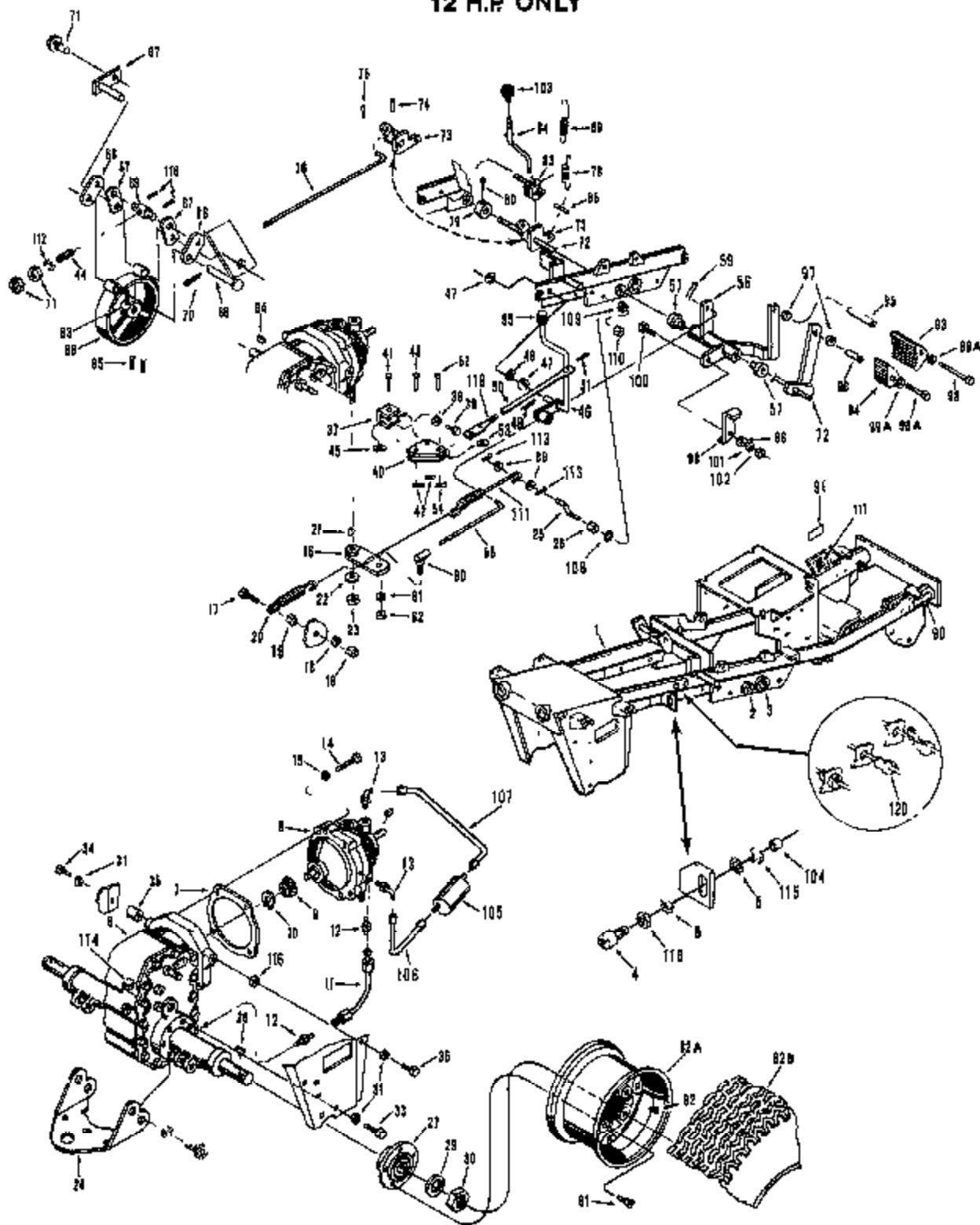
HYDRO TRACTORS

1250 1450 1650

PRODUCT NOS. 53276 - 12 H.P. SERIAL NO. 537325 & UP
53301 - 14 H.P. SERIAL NO. 537321 & UP
53332 - 16 H.P. SERIAL NO. 537617 & UP

ILLUSTRATION 1

FRAME, TRANSAXLE & BRAKE LINKAGE
12 H.P. ONLY



PARTS LIST-ILLUSTRATION 1

Ref. No.	Part No.	Quan.	Description
1	116431	1	Frame Assembly
2	346133	2	Bushing, Brake Shaft Pivot
3	351508	2	Bushing, Lift Shaft Pivot
4	128338	1	Safety Switch
5	447022	2	Lockwasher, Ext. Tooth
6	116256	1	Transaxle Assembly
7	350946	1	Gasket, Hydrogear
8	116426	1	Hydrogear Assembly
9	335166	1	Bevel Pinion
10	458009	1	Ring, Retaining
11	350945	1	Tube, Hydrogear to Transaxle
12	350947	2	Male Connector, 37° Flare
13	351107	2	Male Elbow
14	400286	4	Screw, 3/8-16 x 2-3/4 Hex Hd Cap
15	446142	4	Lockwasher, 3/8 Hvy
16	158982	1	Hydro Actuating Arm Assembly
17	400190	1	Screw, 5/16-18 x 1-1/4 Hex Hd
18	446138	1	Lockwasher, 5/16 Hvy, Hydro
19	443806	2	Nut, 5/16-18 Hex, Hydro
20	360556	1	Spring, Hydro Control Neutralizer
21	483005	1	Key, 1/8 x 5/8 Woodruff Actuating
22	453017	1	Washer, 1/2 SAE Flat, Actuating
23	444758	1	Nut, 1/2-13 Hex, Actuating Arm
24	330516	1	Draw Bar Assembly
25	382500	1	Stud, Cranked
26	444782	1	Nut, 3/8-16 Hex C/Lock Stud Mtg
27	218060	2	Hub, Rear Wheel
28	463038	2	Key, 1/4 x 1-1/8 Woodruff
29	446188	2	Lockwasher, 1-1/8 Med
30	443842	2	Nut, 1-1/8-12 Hex Jam
31	446154	6	Lockwasher, 1/2 Hvy
32	400428	2	Screw, 1/2-18 x 2-3/4 Hex Hd Cap
33	400410	2	Screw, 1/2-18 x 1-3/4 Hex Hd Cap
34	400410	1	Screw, 1/2-18 x 1-3/4 Hex Hd Cap
35	361632	1	Spacer, L H
36	400404	1	Screw, 1/2-18 x 1 Hex Hd Cap
37	351573	1	Bracket, Bell Crank Mounting
38	446180	2	Lockwasher, 1/4 Hvy
39	400108	2	Screw, 1/4-20 x 5/8 Hex Hd Cap
40	335227	1	Bell Crank
41	461487	1	Pin, 3/8 x 1-1/4 Clevis
42	460014	2	Pin, 3/32 x 3/4 Cotter
43	352142	1	Pin, Bell Crank to Shift Rail Mtg.
44	351866	1	Spring, Compression
45	464012	1	Washer, Shakeproof
46	142092	1	Shift Assembly
47	459011	2	Washer, 3/8 SAE
48	454012	1	Washer, Shakeproof
49	450026	1	Pin, 1/8 x 3/4 Cotter
50	359531	1	Rod, Shift
51	480028	2	Pin, 1/8 x 3/4 Cotter
52	362142	1	Pin
53	464026	1	Washer, Shakeproof
54	480014	1	Pin, 3/32 x 3/4 Cotter
55	351637	1	Knob, Shift Lever
56	181794	1	Speed Control Assembly
57	346133	2	Bushing
58	335272	1	Rod, Speed Control
59	460028	1	Pin, 1/8 x 1 Cotter
60	310089	1	Bell Joint
61	446142	1	Lockwasher, 3/8 Hvy
62	443112	1	Nut, 3/8-24 Hex
63	218068	1	Drum, Brake

Ref. No.	Part No.	Quan.	Description
64	463017	1	Key, 3/16 x 3/4 Woodruff
65	415519	2	Screw, 5/16-18 x 3/8 Sec Hd Set
66	129789	1	Brake Band & Lining Assembly
67	359393	2	Link, Brake Short
68	359392	2	Link, Brake Long
69	359395	1	Pin, Connecting
70	460028	1	Pin, 1/8 x 1 Cotter
71	408002	1	Screw, 1/4-20 x 1/2 W/Washer
72	130895	1	Brake Arm Assembly
73	161812	1	Brake Lock Sector Assembly
74	461397	1	Pin, 1/4 x 1-1/4 Roll
75	489014	1	Pin, 3/32 x 3/4 Cotter
76	336709	1	Rod, Brake
77	444718	2	Nut, 5/16-18 Hex C/Lock
78	346272	1	Spring, Brake Pedal Return
79	343120	1	Collar
80	412004	1	Screw, 1/4-20 x 3/8 Sq Hd Set
81	316288	10	Bolt, Rear Wheel
82A	121824	2	Wheel, Rear
82B	341878	2	Tire, Wide Base Rear 23x9 50-12
83	182095	1	Brake Lock Pawl Assembly
84	369041	1	Rod, Brake Lock Actuator
85	461357	1	Pin, 1/8 x 5/8 Roll
86	461490	1	Pin, Clevis 1/2 x 1 3/4
87	182077	1	Band Pivot Assem
88	453011	3	Washer, 3/8 SAE Flat
89	359159	1	Spring
90	336514	2	Decal, Warning (Heat)
91		1	Plate, Serial No
92	341680	2	Valve, Tire Inflation
93	344896	1	Pedal, Hydro
94	345020	1	Pedal, Brake
95	352513	1	Spacer, Hydro Pedal
96	352514	1	Spacer, Brake Pedal
97	446148	2	Lockwasher, 7/16 Hvy
98	400390	1	Screw, 7/16-20 x 4-1/2 Hex Hd
98A	400366	1	Screw, 7/16-20 x 3 Hex Hd
99	351711	1	Arm, Reverse
99A	453013	2	Washer, 7/16
100	400262	1	Screw, 3/8-18 x 1 Hex Hd
101	446142	1	Lockwasher 3/8 Hvy
102	444782	1	Nut, 3/8-16 Hex C/Lock
103	316209	1	Knob, Parking Brake
104	343785	1	Boot, Safety Switch
105	121675	1	Filter
106	159596	1	Tube Assembly, Filter to Hydro
107	190032	1	Tube Assembly, Hydro to Filter
108	447216	1	Lockwasher, 3/8 Int. Tooth
109	446142	1	Lockwasher, 3/8 Hvy
110	443110	1	Nut, 3/8-16 Hex
111	359501	1	Spring, Hydro Control
112	463008	1	Washer, 5/16 Plain
113	460026	2	Pin, 1/8 x 1 Cotter
114	351313	1	Vent, Air
115	343784	2	Nut
116	312746	AR	Spacer, 1/8
117	359364	4	Isolator, Engine
118	461371	2	Pin, Roll 5/32 x 3/4
119	359632	1	Pin, Adjusting
120	362497	1	Bushing, Strain Relief

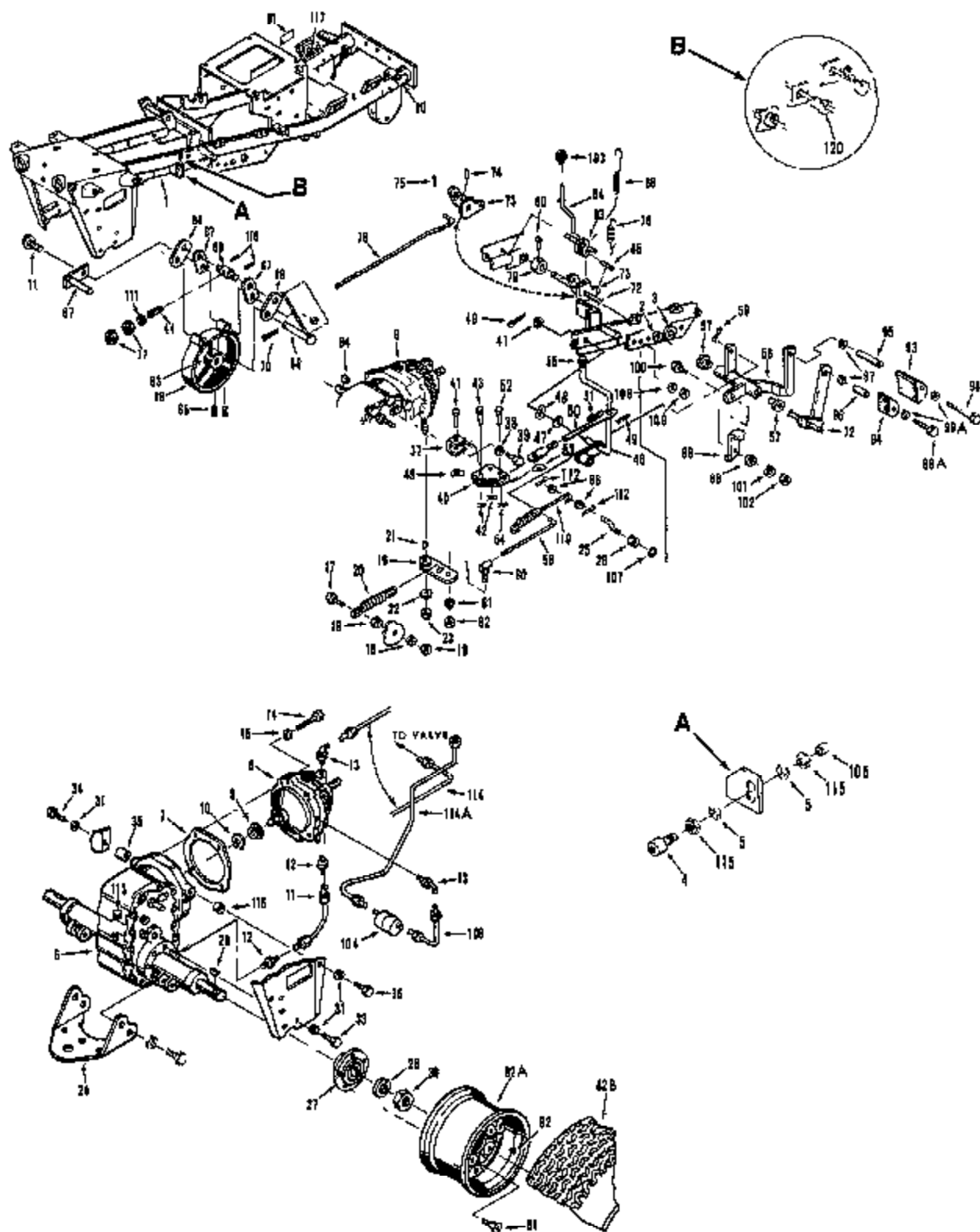
AR - As required.

* See illustration 13 for complete service parts breakdown.

** See illustration 12 for complete service parts breakdown.

ILLUSTRATION 2

FRAME, TRANSAXLE & BRAKE LINKAGE
14 & 16 H.P. ONLY



PARTS LIST-ILLUSTRATION 2

Ref. No.	Part No.	Quan.	Description	Ref. No.	Part No.	Quan.	Description
1	118431	1	Frame Assembly	64	463017	1	Key, 3/16 x 3/4 Woodruff
2	346133	2	Bushing Brake Shaft Pivot	65	415516	2	Screw, 5/16-18 x 3/8 Set
3	351608	2	Bushing Lift Shaft Pivot	66	123783	1	Brake Band & Lining Assembly
4	126338	1	Safety Switch	67	358993	2	Link Brake Short
5	447022	2	Lockwasher, Ext. Tooth	68	358992	2	Link Brake Long
6**	118256	1	Transaxle Assembly	69	358995	1	Pin Connecting
7	350946	1	Gasket, Hydrogear	70	480028	1	Pin, 1/8 x 1 Cotter
8*	118425	1	Hydrogear Assembly	71	408002	1	Screw, 1/4 - 20 x 1/2 w/Washer
9	335186	1	Bevel Pinion	72	130602	1	Brake Arm Assembly
10	458008	1	Ring, Retaining	73	161612	1	Brake Lock Sector Assembly
11	350945	1	Tube, Hydrogear to Transaxle	74	461397	1	Pin, 1/4 x 1-1/4 Roll
12	350947	2	Male Connector, 37° Flare	75	480014	1	Pin, 3/32 x 3/4 Cotter
13	351107	2	Male Elbow	76	336709	1	Rod, Brake
14	400286	4	Screw, 3/8-16 x 2-3/4 Hex Hd	77	444718	2	Nut, 5/16-18 Hex C/Lock
15	446142	4	Lockwasher, 3/8" Hvy	78	345272	1	Spring, Brake Pedal Return
16	158862	1	Hydro Actuating Arm Assembly	79	343120	1	Coiler
17	400190	1	Screw, 5/16-18 x 1-1/4 Hex Hd	80	412004	1	Screw, 1/4-20 x 3/8 Set
18	446136	1	Lockwasher, 5/16 Hvy	81	315268	10	Bolt, Rear Wheel
19	443806	2	Nut, 5/16-18 Hex	82A	121924	2	Wheel, Rear
20	350558	1	Spring, Hydro Control Neutralizer	82B	361663	2	Tire, Wide Base Rear, 23 x 10.50-12
21	463005	1	Key, 1/8 x 5/8 Woodruff	83	182095	1	Brake Lock Pawl Assembly
22	453017	1	Washer, 1/2 SAE Flat	84	359041	1	Rod, Brake Lock Actuator
23	444758	1	Nut, 1/2-13 Hex	85	461357	1	Pin, 1/8 x 5/8 Roll
24	320515	1	Draw Bar Assembly	86	461490	1	Pin, 1/2 x 1 3/4 Clevis
25	352600	1	Stud, Dranked Hydro Control Spring Mtg	87	182077	1	Band, Pivot Assem
26	444782	1	Nut, 3/8-18 Hex C/Lock	88	453011	3	Washer, 3/8 SAE Flat
27	218080	2	Hub, Rear Wheel	89	359153	1	Spring, Brake Lock Release
28	463036	2	Key, 1/4 x 1-1/8 Woodruff	90	336614	2	Decal, Warning (Heat)
29	446188	2	Lockwasher, 1-1/8 Med	91		1	Plate, Serial No.
30	443842	2	Nut, 1-1/8-12 Hex Jam	92	341680	2	Valve, Tire Inflation
31	448154	8	Lockwasher, 1/2 Hvy	93	344895	1	Pedal, Hydro
32	400426	2	Screw, 1/2-13 x 2-3/4 Hex Hd	94	345020	1	Pedal, Brake
33	400410	2	Screw, 1/2-13 x 1-3/4 Hex Hd	95	362613	1	Spacer, Hydro Pedal
34	400410	1	Screw, 1/2-13 x 1-3/4 Hex Hd	96	352514	1	Spacer, Brake Pedal
35	351832	1	Spacer	97	446148	2	Lockwasher, 7/16 Hvy
36	400404	1	Screw, 1/2-13 x 1 Hex Hd	98	400390	1	Screw, 7/16-20 x 4-1/2 Hex Hd
37	351573	1	Bracket, Ball Crank Mounting	98A	400388	1	Screw, 7/16-20 x 3 Hex Hd
38	446130	2	Lockwasher, 1/4 Hvy	99	351711	1	Arm, Reverse
39	400706	2	Screw, 1/4-20 x 5/8 Hex Hd	99A	453013	2	Washer, 7/16
40	335227	1	Ball Crank	100	400282	1	Screw, 3/8-16 x 1 Hex Hd
41	461487	1	Pin, 3/8 x 1-1/4 Clevis	101	446142	1	Lockwasher 3/8 Hvy
42	480014	2	Pin, 3/32 x 3/4 Cotter	102	444782	1	Nut, 3/8-16 Hex, C/Lock
43	352142	1	Pin	103	215208	1	Knob, Parking Brake
44	351956	1	Spring Compression	104	121675	1	Filter Assembly
45	454012	1	Washer, Shakeproof	105	248785	1	Boot Safety Switch
46	142082	1	Lever Assem, Hyd. Shift	106	159568	1	Tube Assembly, Filter to Hydro
47	453011	2	Washer, 3/8 SAE	107	447218	1	Lockwasher, 3/8 Int Tooth
48	454012	1	Washer, Shakeproof	108	446142	1	Lockwasher, 3/8 Hvy
49	460026	1	Pin, 1/8 x 3/4 Cotter	109	443110	1	Nut, 3/8-16 Hex
50	358531	1	Rod, Shift	110	352501	1	Spring, Hydro Control
51	460028	2	Pin, 1/8 x 3/4 Cotter	111	453009	1	Washer, 5/16 SAE Flat
52	352142	1	Pin, Actuator Rod to Ball Crank	112	460028	2	Pin, 1/8 x 1 Cotter
53	454026	1	Washer, Shakeproof	113	351313	1	Vent Air
54	460014	1	Pin, 3/32 x 3/4 Cotter	114	116430	1	Tube Assem., Valve to Filter
55	351837	1	Knob, Shift Lever	114A	116428	1	Tube Assem., Hydro to Valve
56	161784	1	Speed Control Assembly	115	343784	2	Nut, Safety Switch Mounting
57	346133	2	Bushing	116	312746	AR	Spacer
58	335272	1	Rod, Speed Control	117	359364	4	Isolator Engine
59	460028	1	Pin, 1/8 x 1 Cotter	118	461371	2	Pin, Roll, 5/32 x 3/4
60	310068	1	Ball Joint	119	359632	1	Pin, Adjusting
61	446142	1	Lockwasher 3/8 Hvy	120	352487	1	Bushing, Strain Relief
62	443112	1	Nut, 3/8-24 Hex				
63	218059	1	Drum, Brake				

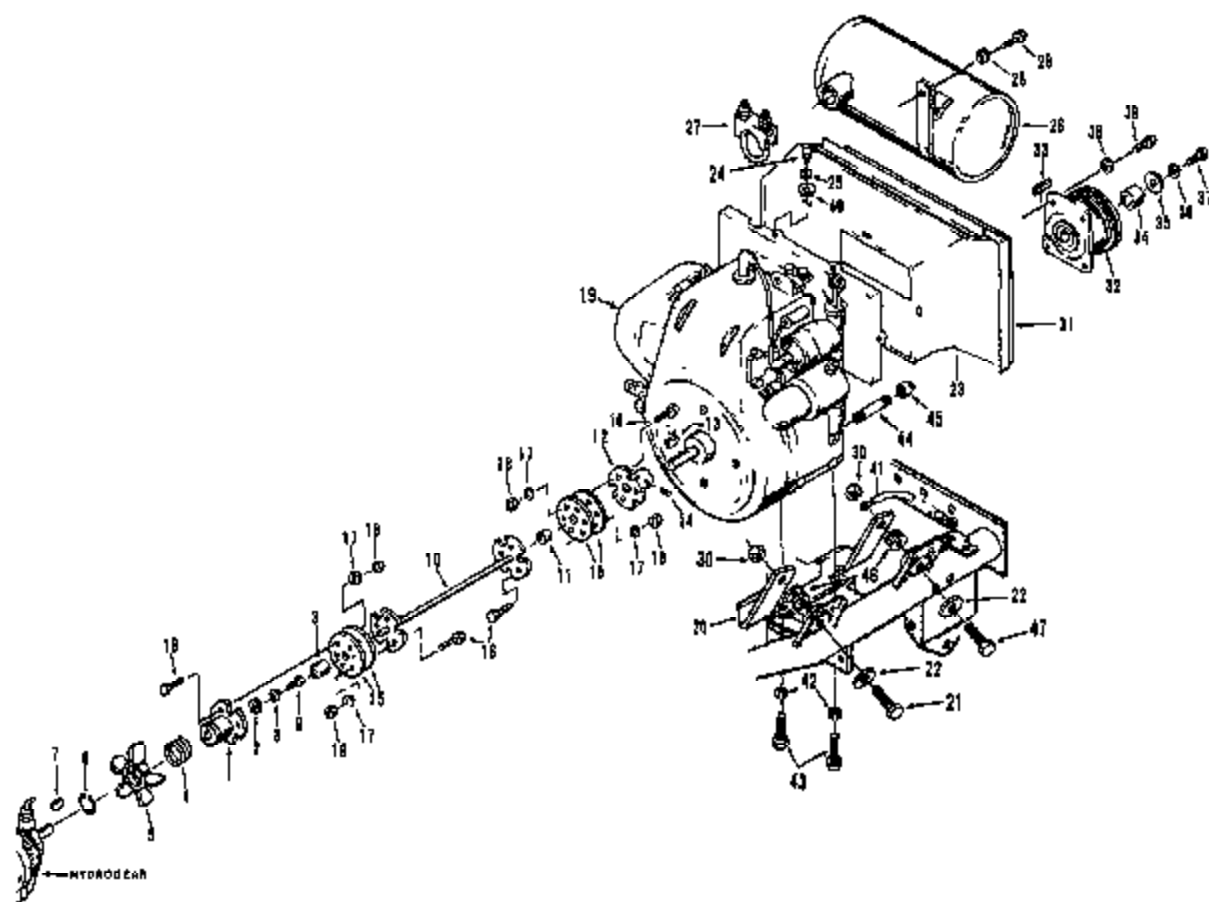
AR - As required

* See illustration 13 for complete service parts breakdown.

** See illustration 12 for complete service parts breakdown.

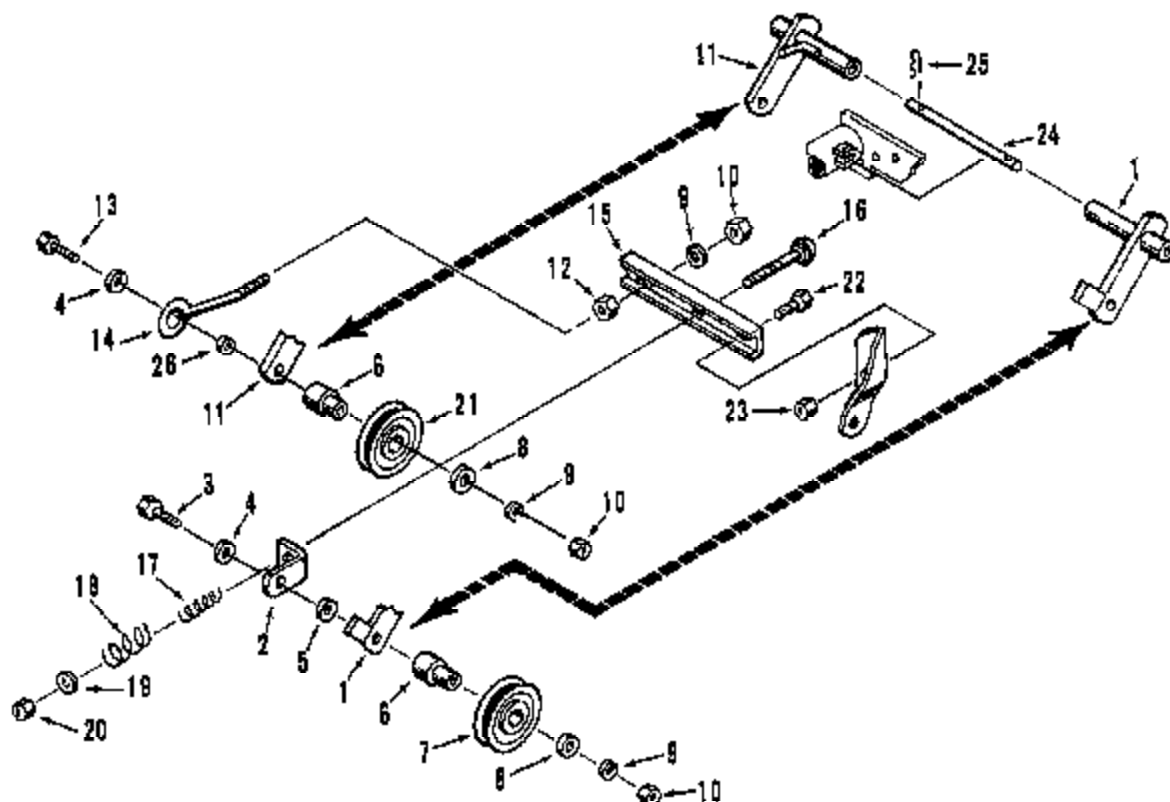
ILLUSTRATION 3

ENGINE & DRIVE SHAFT



PARTS LIST-ILLUSTRATION 3

Ref. No.	Part No.	Quan.	Description
1	158483	1	Coupling Assembly
2	306537	1	Washer
3	313577	1	Bearing, Drive Shaft Pilot
4	317318	1	Spring Fan Mounting
5	335219	1	Fan
6	458455	1	Ring, Retaining
7	483029	1	Key, 3/16 x 5/8 Woodruff
8	446136	1	Lockwasher, 5/16 Hvy
9	400188	1	Screw, Coupling to Hydro
10	129643	1	Coupling Shaft Assembly
11	351634	1	Bushing, Drive Shaft Pivot
12	129644	1	Front Coupling Assembly
13	463925	1	Key, 3/16 x 1 Woodruff
14	412033	1	Screw, 3/8-18 x 1/2 Sq Hd Set
15	950756	4	Disc, Coupling
16	400262	12	Screw, 3/8-16 x 1 Hex Hd
17	453D11	12	Washer, 3/8 Flat
18	444762	12	Nut, 3/8-16 Hex O/Lock
19		1	Engine, Kohler, K-341, AQS, 16 H P
19		1	Engine, Kohler, K-321, AQB, 14 H P
19		1	Engine, Kohler, K-301, AQS, 12 H P
20	385D92	2	Bracket, Engine Mtg
21	400268	3	Bolt, 3/8-16 x 1 3/4 Hex
22	958D56	4	Washer
23	121976	1	Air Ducting Assembly (Inc Ref 31)
24	400106	8	Screw, 1/4-20 x 5/8
25	446130	6	Lockwasher, 1/4 Hvy
26	358630	1	Muffler Assembly
27	348956	1	Clamp, Muffler Mounting
28	446136	1	Lockwasher, 5/16 Hvy
29	400189	1	Bolt, 5/16-16 x 7/8
30	444810	4	Nut 3/8-16, Hex Flex Lock
31	358958	1	Seal, Engine Duct
32	121487	1	Electric P T O Clutch
33	351648	1	Key, Electric Clutch Mtg.
34	351635	1	Spacer, Electric Clutch Mtg.
35	345643	1	Washer, Clutch Retainer
36	446148	1	Lockwasher, 7/16 Hvy
37	400372	1	Screw, 7/16-20 x 1-1/4 Hex Hd
38	446148	4	Lockwasher, 7/16 Hvy
39	400330	4	Screw, 7/16-14 x 3/4 Hex Hd
40	452004	6	Washer, 1/4 Flat
41	358428	1	Ground Engine to Frame
42	446142	4	Lockwasher, 3/8 Hvy
43	400262	4	Screw, 3/8-16 x 1 Hex Hd Cap
44	471772	1	Nipple, 1/4 NPT 3" Long
45	472447	1	Cap, 1/4 NPT Pipe
46	452006	AR	Washer, 3/8 Flat
47	400270	2	Bolt, 3/8-16 x 2 Hex Hd

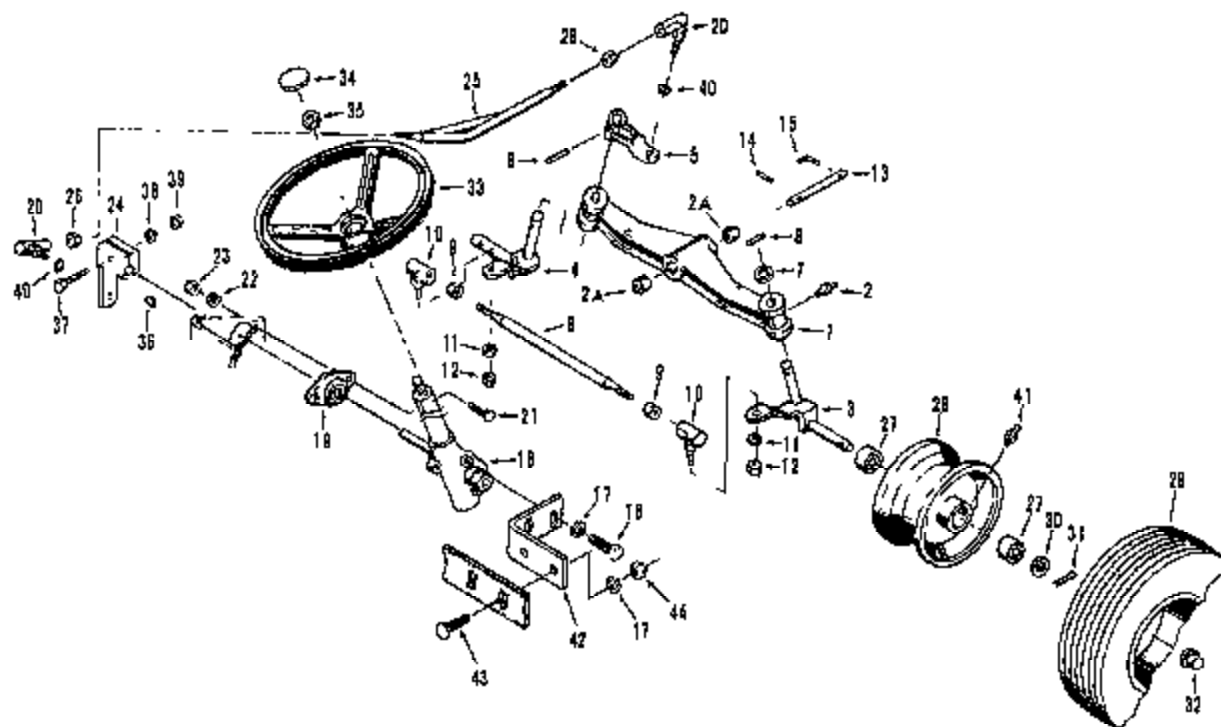
ILLUSTRATION 4**POWER TAKE OFF ASSEMBLY (PTO)****PARTS LIST**

Ref. No.	Part No.	Quan.	Description
1	130640	1	Idler Arm & Spring Tension Assembly
2	500971	1	Bracket, Idler Spring Retaining
3	400272	1	Screw, 3/8-16 x 2-1/4 Hex Hd
4	310711	2	Washer
5	352594	1	Spacer
6	344952	2	Idler, Stand Off
7	330815	1	Pulley, Idler
8	453011	2	Washer
9	446142	3	Lockwasher, 3/8 Hvy
10	443110	3	Nut, 3/8-16 Hex
11	130224	1	Fixed Idler Assembly
12	443810	1	Nut, 3/8-16 Hex, Jam
13	400274	1	Screw, 3/8-16 x 2-1/2 Hex Hd
14	354057	1	Rod, Fixed Idler Retaining
15	336418	1	Bracket, Idler Spring & Adjusting Screw
16	441880	1	Bolt, 3/8-16 5-1/2 Carriage
17	353746	1	Spring, Comp Idler Tension (Inside)
18	353747	1	Spring, Comp Idler Tension (Outside)

Ref. No.	Part No.	Quan.	Description
19	310711	1	Washer, Spring Retaining
20	444810	1	Nut, 3/8-16 Hex Flex Lock
21	330814	1	Pulley, Idler
22	400282	2	Screw, 3/8-16 x 1 Hex Hd
23	444810	2	Nut, 3/8-16 Hex Flex Lock
24	352067	1	Rod, Idler Pivot
25	480816	2	Cotter, Hairpin
26	357614	1	Spacer

ILLUSTRATION 5

STEERING LINKAGE



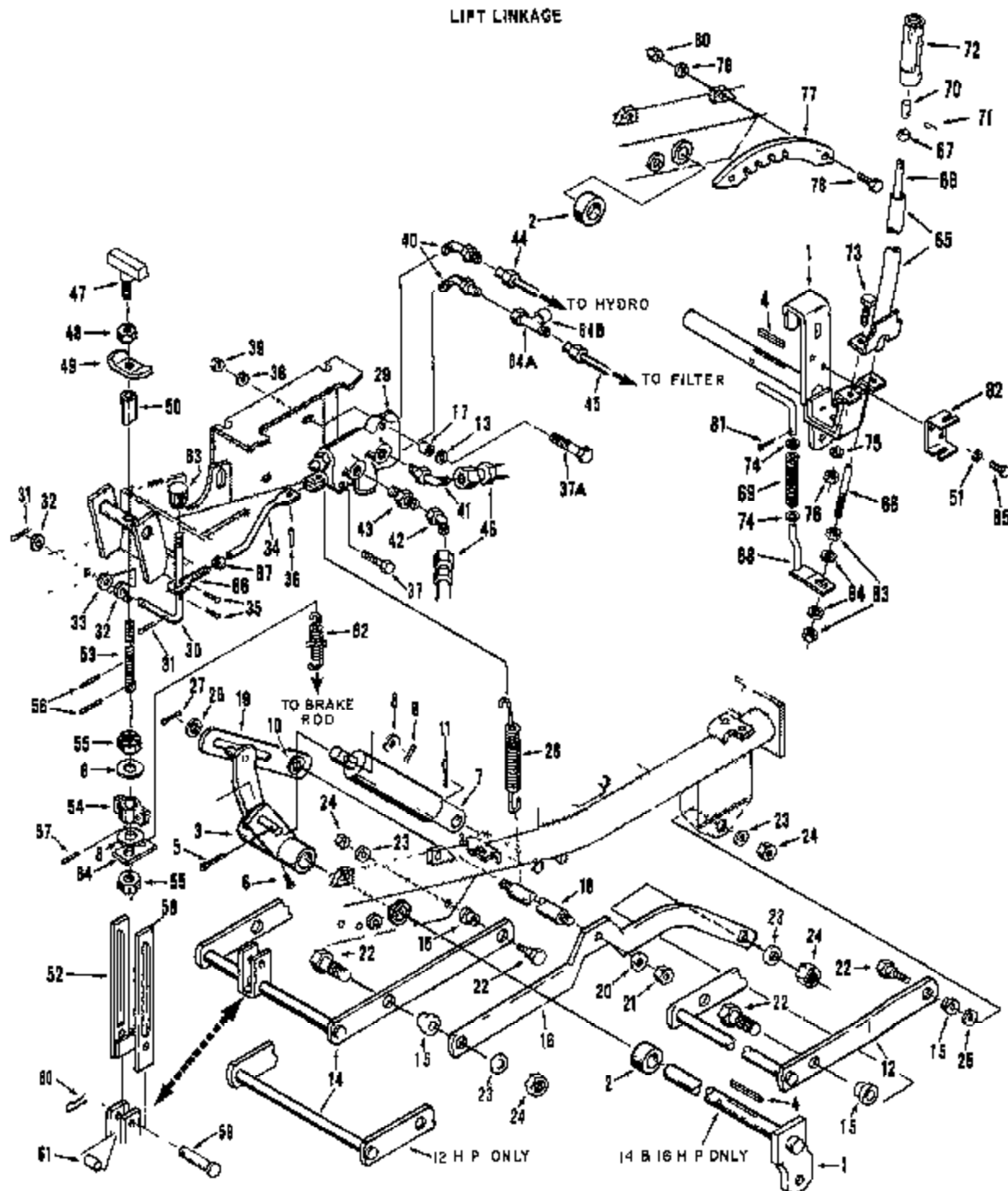
PARTS LIST

Ref. No.	Part No.	Quan.	Description
1	161801	1	Front Axle Assembly(Incl. Ref. 2 & 2A)
2	471219	2	Grease Fitting
2A	351798	2	Bushing
3	128628	1	Spindle Assembly R.H.
4	121827	1	Spindle Assembly L.H.
5	161800	1	Steering Arm Assembly
6	461404	2	Pin, 5/16 x 1-1/2 Roll
7	324986	1	Washer, Spindle Retainer R.H.
8	361647	1	Rod, Tie
9	443820	2	Nut, 1/2-20 Hex Jam
10	164816	2	Ball Joint Assembly
11	448164	2	Lockwasher, 1/2 Hvy
12	443820	2	Nut, 1/2-20 Hex Jam
13	338530	1	Pin, Front Axle Mounting
14	461383	1	Roll Pin, 3/16 x 1
15	358665	1	Pin, Anti-Rotation
16*	121928	1	Steering Gear Assembly
17	448142	4	Lockwasher, 3/8 Hvy
18	400264	2	Screw, 3/8-16 x 1 1/4 Hex Hd
19	353349	1	Bearing
20	161636	2	Ball Joint Assembly
21	441802	2	Bolt, 5/16-18 x 3/4 Carriage
22	446136	2	Lockwasher 5/16 Hvy
23	443106	2	Nut, 5/16-18 Hex
24	141973	1	Steering Arm & Hub Assembly
25	130772	1	Drag Link, Assembly

Ref. No.	Part No.	Quan.	Description
26	443820	2	Nut, 1/2-20 Hex Jam
27	328106	4	Bearing, Front Wheel
28*		2	Wheel, Front
29*		2	Tire, Front
30	302458	2	Washer, Front Wheel Mounting
31	460040	2	Pin, 5/32 x 1-1/4 Cotter
32	658423	2	Cap, Front Wheel Hub
33	330526	1	Steering Wheel
34	335257	1	Cap, Steering Wheel
35	443828	1	Nut, 5/8-18 Hex Jam
36	463017	1	Key, Woodruff
37	400196	1	Bolt, 5/16-18 x 2
38	448136	1	Lockwasher, 5/16 Hvy
39	443108	1	Nut, 5/16-18
40	447220	2	Lockwasher, 1/2 Int. Tooth
41	471214	2	Grease Fitting, Front Wheel
42	338738	1	Bracket, Steering Gear
43	441676	2	Bolt, 3/8-16 x 1-1/4 Carr.
44	443110	2	Nut, 3/8 16 Hex

* See your dealer for service.

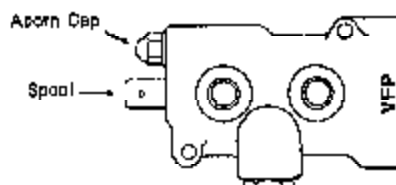
** See illustration #1 for complete service parts breakdown.

ILLUSTRATION 6**LIFT LINKAGE**

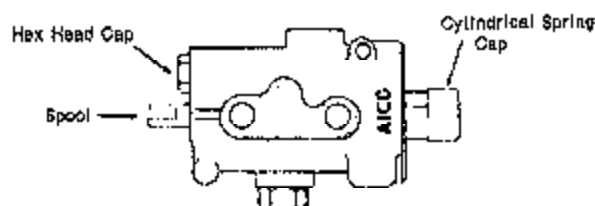
PARTS LIST-ILLUSTRATION 6

Ref. No.	Part No.	Quan.	Description
1	121978	1	Lift Arm & Pivot Weldment, 12 H.P.
1	130838	1	Lift Arm & Pivot Weldment, 14 & 16 H.P.
2	351749	1	Spacer, Lift Arm
3	130071	1	Lift Arm Assembly
4	310437	1	Key, 3/16 x 3/16 x 2-3/8
5	460036	1	Pin, 1/8 x 2 Cotter
6	412014	1	Screw, 5/16-18 x 1/2 Set
7*	121997	1	Cylinder, 2" Lift
8*	453017	3	Washer, 17-32" SAE Flat
9*	460028	1	Pin, 1/8 x 1 Cotter
10	343488	1	Bushing, Lift Link
11*	460030	1	Pin, 1/8 x 1-1/4 Cotter
12	180683	1	Front Hanger
13*	452004	1	Washer, 1/4 Flat
14	180682	1	Rear Hanger, 12 H.P.
14	130681	1	Rear Hanger, 14 & 16 H.P.
15	351587	8	Bushing, Rear Hanger Pivot
16	336638	2	Connecting Link
17*	313260	1	Spacer, Upper Bolt
18	358224	1	Crossbar, Connecting Link
19	158850	1	Lift Link Assembly
20	453017	2	Washer, 1/2 SAE Flat
21	444758	2	Nut, 1/2-13 Hex, C/Lock
22	351585	8	Bolt, Linkage Mounting
23	453011	8	Washer, 3/8 SAE Flat
24	444752	8	Nut, 3/8-16 Hex C/Lock
25	452008	2	Washer, Flat 7/16
26	313509	1	Washer
27	460028	1	Pin, Cotter 1/8 x 1
28	358360	1	Spring
29**		1	Valve, Lift
30*	351536	1	Lever, Valve Shift
31*	480028	2	Pin, 1/8 x 3/4 Cotter
32*	453011	2	Washer, 3/8 SAE
33*	454012	1	Washer, Shakeproof
34*	339247	1	Roll Shift
35*	460026	2	Pin, 1/8 x 3/4 Cotter
36*	461362	1	Pin, Roll 3/32 x 3/4
37*	400122	1	Screw, 1/4-20 x 2-1/2 Hex Hd
37A*	400132	1	Screw, 1/4-20 x 2-3/4 Hex
38*	448130	2	Lockwasher, 1/4 Hvy
38*	448102	2	Nut, 1/4-20 Hex
40*	358085	2	Elbow, Tubes to Valve - AICO
	361107	2	Elbow, Tubes to Valve - VFP
41*	361389	1	Elbow Hose to Valve
42*	369088	1	Swivel Elbow
43*	367921	1	Restrictor, Ret. Hydraulic Line
44*	116429	1	Tube Assembly, Valve to Hydro
45*	116430	1	Tube Assembly, Valve to Filter
46*	161798	2	Hose Assembly
47*	359093	1	Knob, Micro-Adjust

Ref. No.	Part No.	Quan.	Description
48*	443620	1	Nut, 1/2-20 Hex Jam
48*	358860	1	Lock
50*	358871	1	Tube, Lock
51*	445130	2	Lockwasher, 1/4 Hvy
52*	141981	1	Position Control Link Assam. L.H.
53*	336631	1	Rod, Micro-Adjust
54*	161900	1	Slide Bracket
55*	445886	2	Nut, 1/2-20 Hex Stotted
58*	461889	2	Pin, Roll 1/8 x 3/4
57*	461880	2	Pin, Roll 3/16 x 3/4
58*	336534	1	Link, Micro-Adjust, R.H.
59*	481473	1	Pin, Clavia
60*	480312	1	Halfpin, Cotter
61*	375275	1	Spacer
62*	359084	1	Spring
63*	351537	1	Knob, Lift Handle
64*	356085	1	Bracket, Spring Attachment
64A*	359156	1	Female Run Tee
64B*	354077	1	Cap
65*	121977	1	Handle, Lift
66*	390123	1	Rod, Lift Lever
67*	310890	1	Cotter, Lift Lever Plunger
68*	130742	1	Latch Pin
69*	374964	1	Spring
70*	315348	1	Plunger, Lift Lever
71*	481355	1	Pin, 1/8 x 1/2 Roll
72*	341833	1	Grip, Lift Handle
73*	400180	2	Screw, 5/16-18 x 1-1/4 Hex Hd
74*	453009	2	Washer, 5/16 Flat
75*	448138	2	Lockwasher, 5/16 Hvy
76*	443806	2	Nut, 5/16-18 Hex
77*	336224	1	Quadrant, Lift
78*	400188	2	Screw, 5/16-18 x 1 Hex Hd
79*	448136	2	Lockwasher, 5/16 Hvy
80*	443106	2	Nut, 5/16-18 Hex
81*	480012	1	Pin, 3/32 x 5/8 Cotter
82*	359427	1	Guide
83*	445777	2	Nut, 5/16-18 Hex Lock
84*	453008	2	Washer, 5/16 Flat
85*	400104	2	Screw, 1/4, 20 x 1/2 Hex
86*	376274	1	Pin, Adjusting
87*	443110	1	Nut, 3/8-16 Hex



VFP uses seal kit 502449



AICO Uses Seal Kit 502450

* 14 and 16 H.P. only.

o 12 H.P. only.

* For service of cylinder, order part no. 502385.

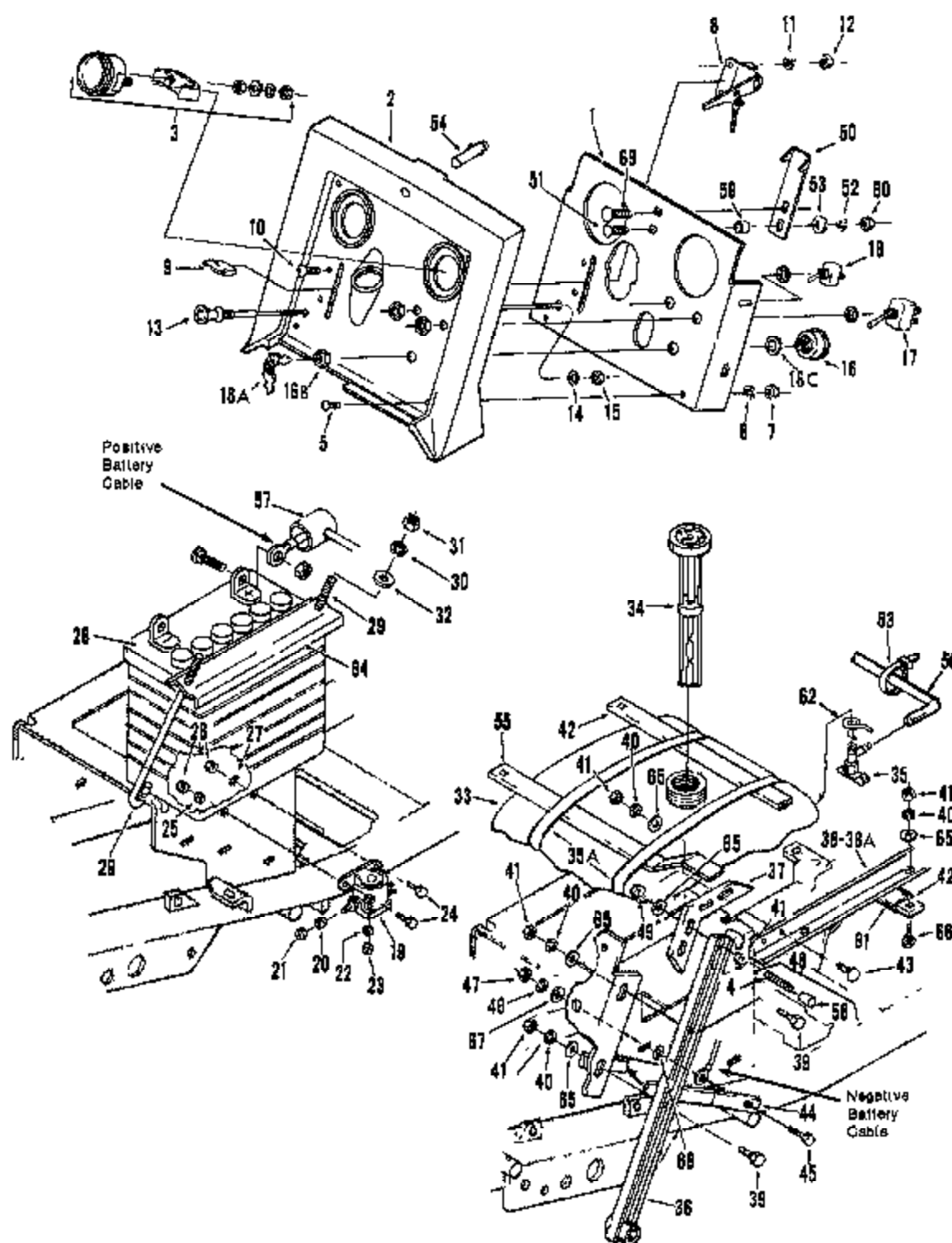
For service of seal, order part no. 502366.

** For service of valve see sketches

For replacement valve order no. 502811.

ILLUSTRATION 7

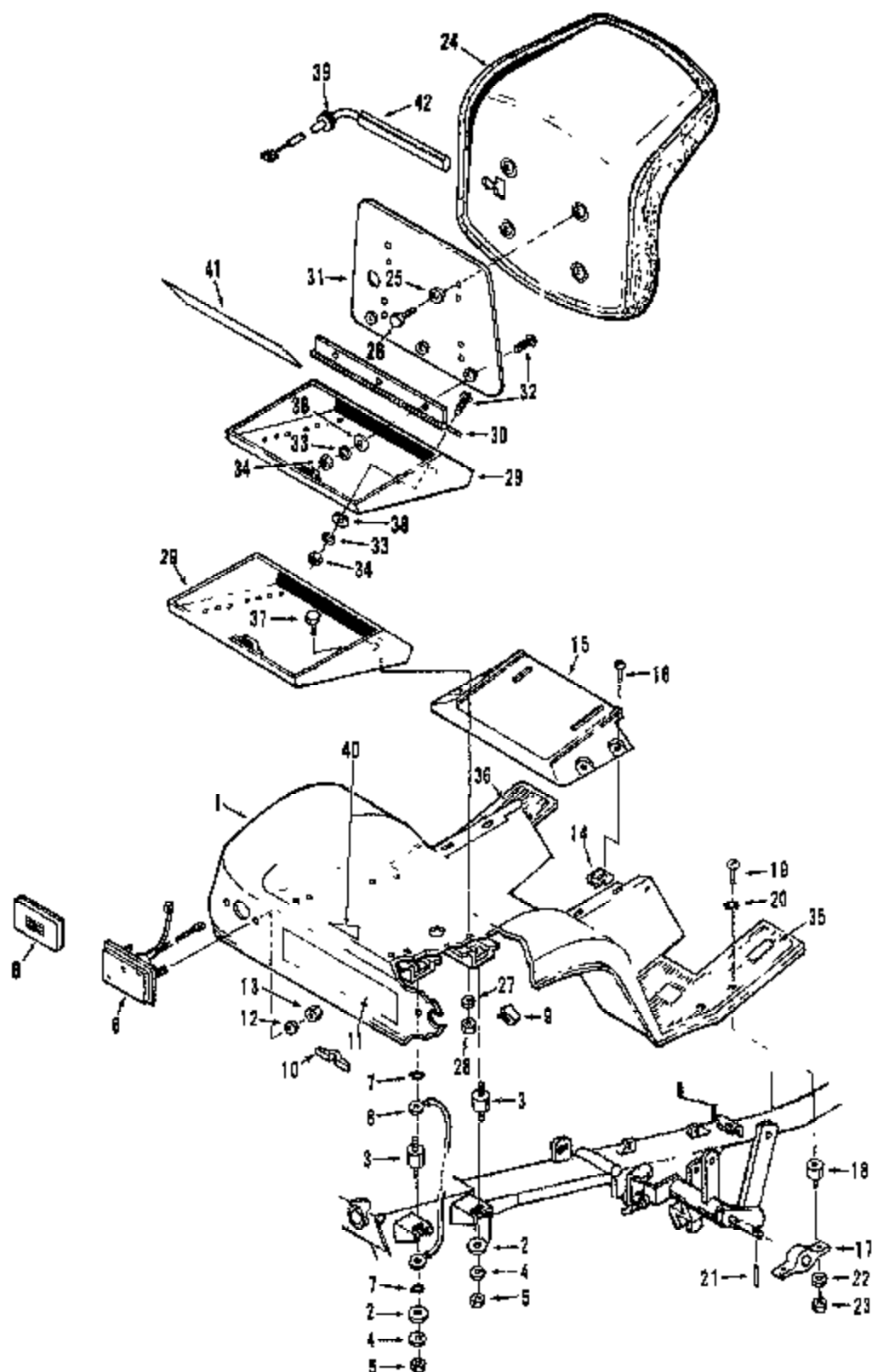
INSTRUMENT PANEL, BATTERY & FUEL TANK



PARTS LIST-ILLUSTRATION 7

Ref. No.	Part No.	Quan.	Description
1	395056	1	Plate, Instrument
2	395061	1	Panel, Dash
3	107917	1	Ammeter
4	375535	2	Stud, Adjuster
5	403658	4	Screw, 8-32x1 1/2 L.G. Slotted C/R
6	446112	4	Lockwasher Hd
7	444306	4	Nut, 8-32 Hex
8	121858	1	Throttle Control & Cable
9	345838	1	Knob, Throttle Control
10	463914	2	Screw, #10-24 x 3/4 C/R Truss Hd
11	446118	2	Lockwasher, #10 Hvy
12	444310	2	Nut, #10-24 Hex
13	130657	1	Choke Control Assembly
14	447014	1	Lockwasher 3/8 Ext. Tooth
15	443912	1	Nut, 3/8-24 Hex Jam
16	128846	1	Ignition Switch (Incl Ref 16A, 16B, 16C)
16A	343060	1	Key (Set of 2)
16B	358968	1	Nut
16C	447221	1	Int. Tooth Lockwasher
17	130613	1	Switch, Electric Clutch
18	158992	1	Switch, Headlight 14 & 16 H.P. only
19	128070	1	Solenoid, Starter
20	446136	2	Lockwasher, 5/16 Hvy
21	443808	2	Nut, 5/16-24 Hex Jam
22	446116	2	Lockwasher, #10 Hvy
23	444312	2	Nut, #10-32 Hex
24	400106	2	Screw, 1/4-20 x 3/4 Hex Hd
25	446130	1	Lockwasher, 1/4 Hvy
26	443102	2	Nut, 1/4-20 Hex
27	447304	1	Lockwasher, 1/4 Ext. Tooth
28		1	Battery (Ref. Only)
29	355464	2	Rod, Battery Hold-Down
30	446120	2	Lockwasher, 1/4 Hvy
31	443102	2	Nut, 1/4-20 Hex
32	462004	2	Washer, 1/4 SAE Flat
33	395044	1	Tank, Fuel, 3 Gal, 12 & 14 H.P.
33	395045	1	Tank, Fuel, 5 Gal, 16 H.P.
34	130684	1	Fuel Tank Cap & Gauge, 12 & 14 H.P.
34	161783		Fuel Tank Cap & Gauge, 16 H.P.
35	308552	1	Shut-Off Valve Assembly

Ref. No.	Part No.	Quan.	Description
35A	502423	1	Set, Fuel Tank Strap (12 & 14 H.P.)
	502424	1	Set, Fuel Tank Strap (16 H.P.)
36	130809	2	Console Arm
37	396539	2	Bracket, Panel Mip.
38	130608	1	Ret., R.H.
38A	130607	1	Ret., L.H.
39	400184	6	Screw, 5/16-18 x 3/4 Hex Hd
40	446136	14	Lockwasher, 5/16 Hvy
41	443106	14	Nut, 5/16-18 Hex
42	336537	1	Support, Gas Tank, Front
43	440078	4	Bolt, 5/16-18 x 3/4 Carriage
44	336538	2	Console Support Strap
45	400108	2	Screw, 1/4-20 x 3/4 Hex Hd
46	446130	2	Lockwasher, 1/4 Hvy
47	443102	2	Nut, 1/4-20 Hex
48	161819	2	Bolt, Adj. Assem (Incl Ref 4 & 58)
49	443108	4	Nut, 5/16-18 Hex
50	336540	1	Hood Lock Spring Latch
51	440046	1	Screw, 1/4-20 x 1 Carriage
52	446130	1	Lockwasher, 1/4 Hvy
53	452002	1	Washer, 1/4 Flat
54	858876	1	Hood Release Activator
55	396739	1	Support, Gas Tank, Rear
56	368887	1	Fuel Line 12 & 14 H.P.
	375110	1	Fuel Line 16 H.P.
57	859044	1	Cap, Positive Battery Terminal
58	353077	2	Tip, Rod
59	350636	1	Spacer
60	443102	1	Nut, 1/4-20 Hex
61	359236	2	Sleeve, Strap
62	359811	1	Clamp, Fuel Valve
63	478154	1	Strap, 16 H.P. Only
64	336740	1	Bracket, Battery
65	453009	16	Washer, 6/16 Flat
66	440080	4	Bolt, 5/16-18 x 7/8 Carr.
67	453023	3	Washer, 1/4 Flat
68	447510	1	Lockwasher, 1/4 Ext. Int. Tooth
69	483630	1	Rivet, 1/4 x 1 Button Hd

ILLUSTRATION 8**REAR FENDER & SEAT**

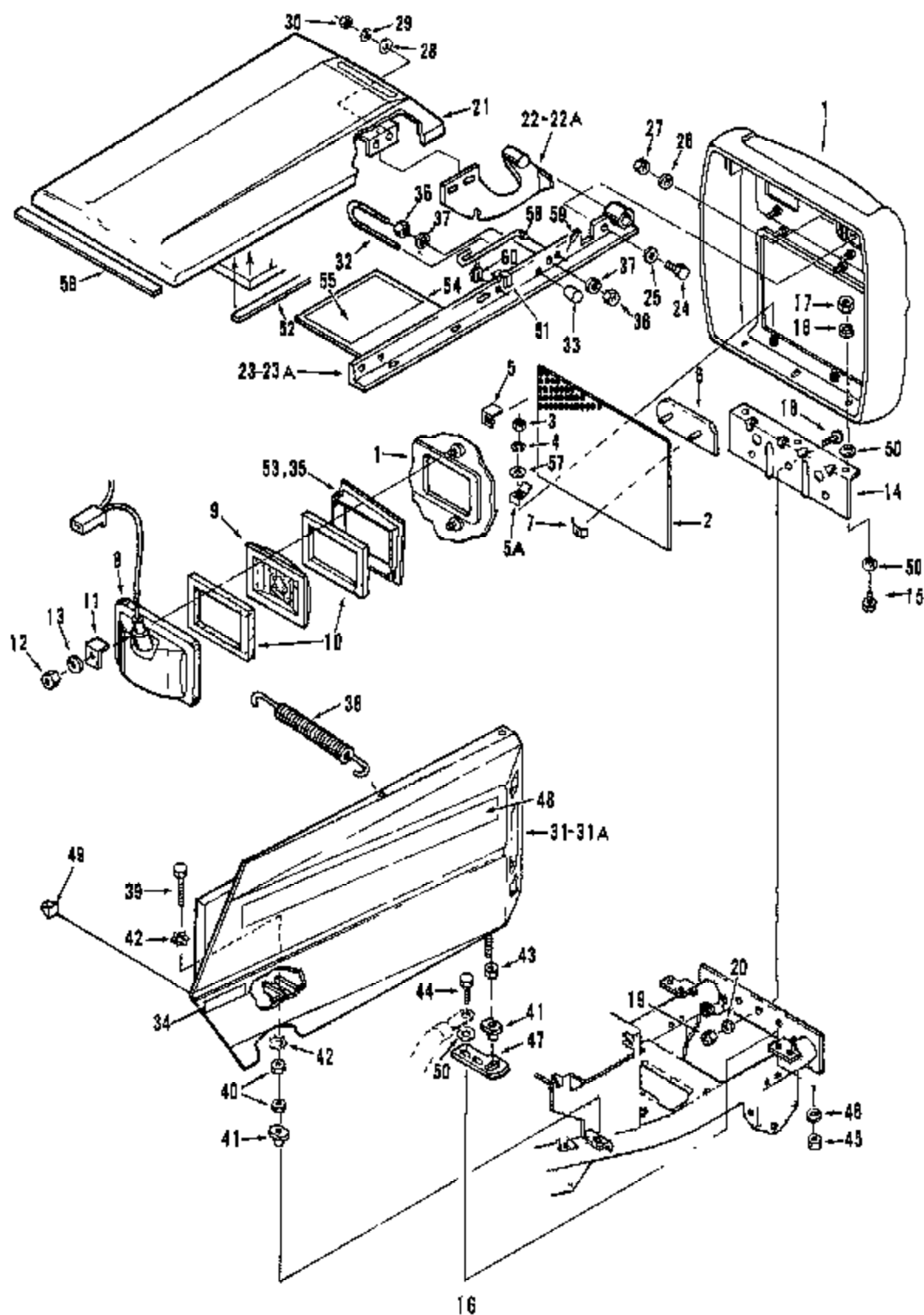
PARTS LIST-ILLUSTRATION 8

Ref. No.	Part No.	Quan.	Description
1	116424	1	Rear Fender and Body Assembly
2	453009	4	Washer, Plain 5/16 SAE
3	351738	4	Mounting, Flexible
4	448136	4	Lockwasher, 5/16 Hvy
5	443106	4	Nut, 5/16-18 Hex
6	336797	2	Tail Light Reflector 12 & 14 H.P.
8	128877	2	Tail Light Assembly 18 H.P. Only
7 *	447302	2	Lockwasher, 5/16 Ext. Tooth
8 *	351955	1	Wire, Ground, Body
9 *	445271	1	Clip, Tinnerman
10 *	352302	2	Retainer, Tail Light Wire
11	336632	1	Decal, Name
12 *	448118	4	Lockwasher, #10 Hvy
13 *	444312	4	Nut, 10-32 Hex
14	445245	4	Nut, Tinnerman
15	385050	1	Insert, Body
16	404014	4	Screw, 1/4-20 x 1/2 C/R Truss Hd
17	353515	2	Bracket, Footboard
18	358858	4	Fender Mounting, Front
19	404014	4	Screw, 1/4-20 x 1/2 C/R Truss Hd
20	447010	4	Lockwasher, 1/4 Ext. Tooth
21	481387	4	Roll Pin, 1/4 x 1-1/4
22	448130	4	Lockwasher, 1/4 Hvy
23	443102	4	Nut, 1/4-20 Hex
24	124084	1	Seat Assembly
25	448186	4	Lockwasher, 5/16 Hvy
26	400182	4	Screw, 5/16-18 x 5/8 Hex Hd
27	446138	4	Lockwasher, 5/16 Hvy
28	443108	4	Nut, 5/16-18 Hex
29	330591	1	Tool Box
30	351686	1	Hinge, Seat
31	330530	1	Plate, Seat Mounting
32	404014	8	Screw, 1/4-20 x 1/2 Phil.
33	448130	6	Lockwasher, 1/4 Hvy
34	443102	8	Nut, 1/4-20 Hex
35	390120	1	Foot Pad, R.H.
36	390121	1	Foot Pad, L.H.
37	400180	4	Screw, 5/16-18 x 1/2 Hex Hd, 12 H.P. only
38	452004	6	Washer, 1/4 Flat
39	352011	1	Grommet
40		1	Decal, OPEL
41	390176	1	Decal, Instruction
42	181259	1	Switch, Seat

* 18 H.P. Only

ILLUSTRATION 9

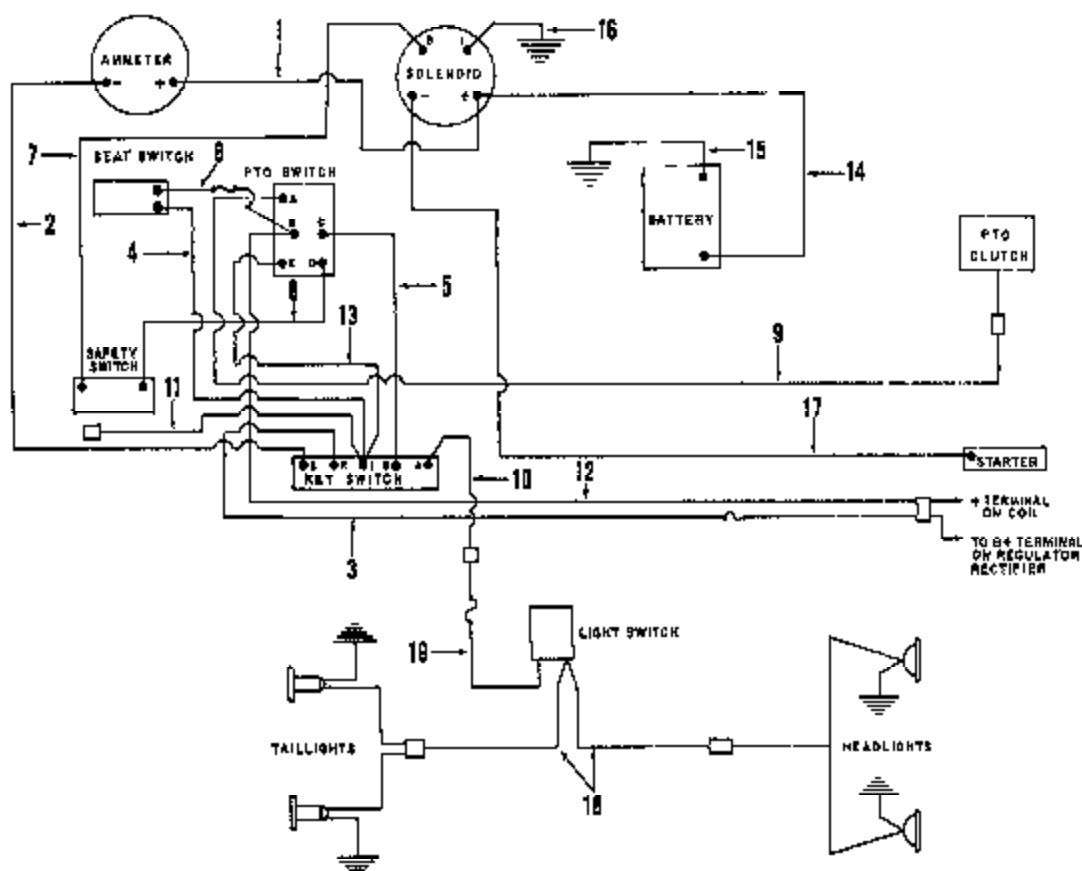
FRONT COILING



PARTS LIST-ILLUSTRATION 9

Ref. No.	Part No.	Quan.	Description
1	121939	1	Front Cowling
2	390114	1	Grill, Front Cowling
3	44310	4	Nut, 10-24 Hex
4	446116	4	Lockwasher, #10 Hvy
5	358935	2	Clip, Grill Mtg., Top
5A	358175	2	Clip, Grill Mtg., Bottom
6	358939	1	Front Name Insert, 12 H.P.
8	358940	1	Front Name Insert, 14 H.P.
6	358945	1	Front Name Insert, 18 H.P.
7	445522	2	Push Nut
8	121990	1	Headlight Assembly (Set of 2) (Incl. Ref. 9 & 10) 14 & 18 Only
9	351936	2	Lens
10	545486	4	Gasket 14 & 18 H.P.
	545488	2	Gasket 12 H.P.
11	358935	4	Clip, Headlight Mounting
12	443102	4	Nut, 1/4-20 Hex
13	446130	4	Lockwasher, 1/4 Hvy
14	390067	1	Bracket, Front Cowling
15	400106	2	Screw, 1/4-20 x 5/8 Hex Hd
16	446130	2	Lockwasher, 1/4 Hvy
17	443102	2	Nut, 1/4-20 Hex
18	404018	3	Screw, 1/4-20 x 3/4 C/R
19	443102	3	Nut, 1/4-20 Hex
20	446130	3	Lockwasher, 1/4 Hvy
21	181713	1	Hood Assembly
22	121928	1	Hood Hinge Assembly, R.H.
22A	121929	1	Hood Hinge Assembly, L.H.
23	130609	1	Rail, Hood Support, R.H.
23A	130607	1	Rail, Hood Support, L.H.
24	400188	2	Screw, 5/16-18 x 1 Hex Hd
25	452008	2	Washer, 5/16 Flat
26	446136	2	Lockwasher, 5/16
27	443106	2	Nut, 5/16 Hex
28	452008	4	Washer, 5/16 Flat
29	446136	4	Lockwasher, 5/16 Hvy

Ref. No.	Part No.	Quan.	Description
30	443108	4	Nut, 5/16-18 Hex
31	181716	1	Side Panel Weldment, R.H.
	181714	1	14 - 18 Hydros Only
31A	181715	1	Side Panel Weldment, L.H.
32	375694	2	Adjuster, (Incl. Ref. 33)
33	353077	2	Tip, Probe
34	338613	1	Decal, Lift Lever, 12 H.P. only
35	338659	1	Insert, Headlight, L.H.
36	443106	4	Nut, 5/16-18 Hex
37	446136	4	Lockwasher, 5/16 Hvy
38	358908	1	Spring, Extension Side Panel Mounting
39	359235	2	Screw, 3/8-16 x 2-3/4
40	443110	4	Nut, 3/8-18 Hex
41	358881	4	Nut, Side Panel Adjusting
42	447014	4	Lockwasher, Ext. 3/8
43	443110	2	Nut, 3/8-18 Hex
44	400112	4	Screw, 1/4-20 x 1 Hex Hd
45	443102	4	Nut, 1/4-20 Hex
46	446130	4	Lockwasher, 1/4 Hvy
47	358679	2	Support, Side Panel Adj.
48	390156	2	Side Panel Decal, R.H.
49	375370	2	Bumper Recept
50	453028	8	Washer, 9/32 Flat
51	445271	1	Clip, Headlight Wire Mounting 14 & 18 Only
52	358886	2	Hood Spacer Strip
53	338552	1	Insert, Headlight, R.H.
54	359287	1	Cover, Battery
55	338640	1	Decal, Battery Danger
56	359289	1	Strip, Hood Spacer
57	452002	4	Washer, #10 Flat
58	338400	1	Rod, Hood Support
59	451958	1	Pin, Rail
60	375627	1	Clip, Hood Support Rod

ILLUSTRATION 10**WIRING DIAGRAM****PARTS LIST**

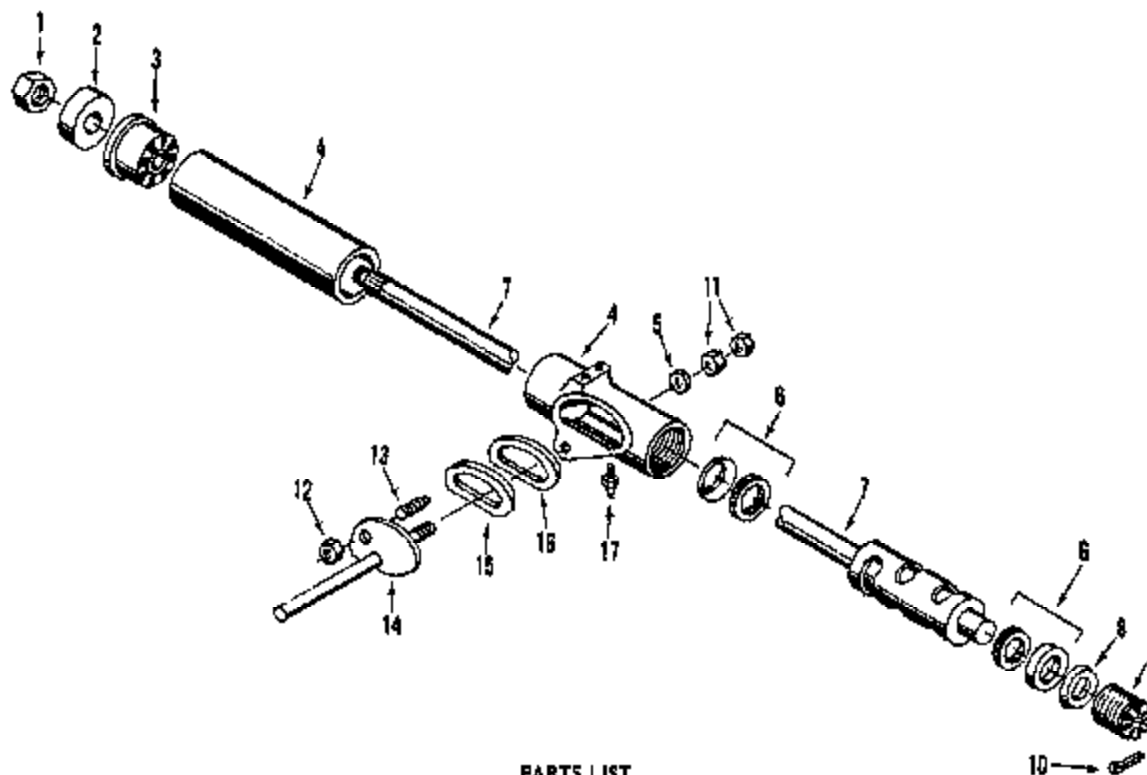
Ref. No.	Part. No.	Quan.	Description
	117764	1	Wiring Harness (Incl. Ref Nos 1-13)
1		1	Wire, Red, Solenoid to Ammeter
2		1	Wire, Yellow, Ammeter to Key Switch
3		1	Wire, Orange, Key Switch to Rectifier (Fused, 30 Amp)
4		1	Wire, Violet, Key Switch to Seat Switch
5		1	Wire, White, Key Switch to PTO Switch
6		1	Wire, Violet, Seat Switch to PTO Switch (Fused, 6 Amp)
7		1	Wire, White, Solenoid to Safety Switch
8		1	Wire, White, Safety Switch to PTO Switch
9		1	Wire, Green, PTO Switch to PTO Clutch
10		1	Wire, Pink, Key Switch to Light Accessory (Pig Tail)
11		1	Wire, Orange, Key Switch to LHM Accessory (Pig Tail)
12		1	Wire, Light Blue, PTO Switch to Coil
13		1	Wire, Violet, Key Switch to PTO Switch
14	359484	1	Cable, Red, Battery to Solenoid
15	375522	1	Cable, Black, Battery to Ground
16	112208	1	Cable, Black, Solenoid to Ground
17	358864	1	Cable, White, Solenoid to Starter
	352307	1	Cable, Pink w/Yellow Tracer
18*			Headlight to Switch to Tail Light
19*	352308	1	Cable, Pink, Switch to Connector
20*	473164	3	Strap Cable Tie
21*	352302	3	Retainer, Wire Harness Hold Down

* Not shown, used to hold wires to tractor frame.

+ 14 & 16 H.P. Only

ILLUSTRATION 11

STEERING GEAR ASSEMBLY - PART NO. 121926

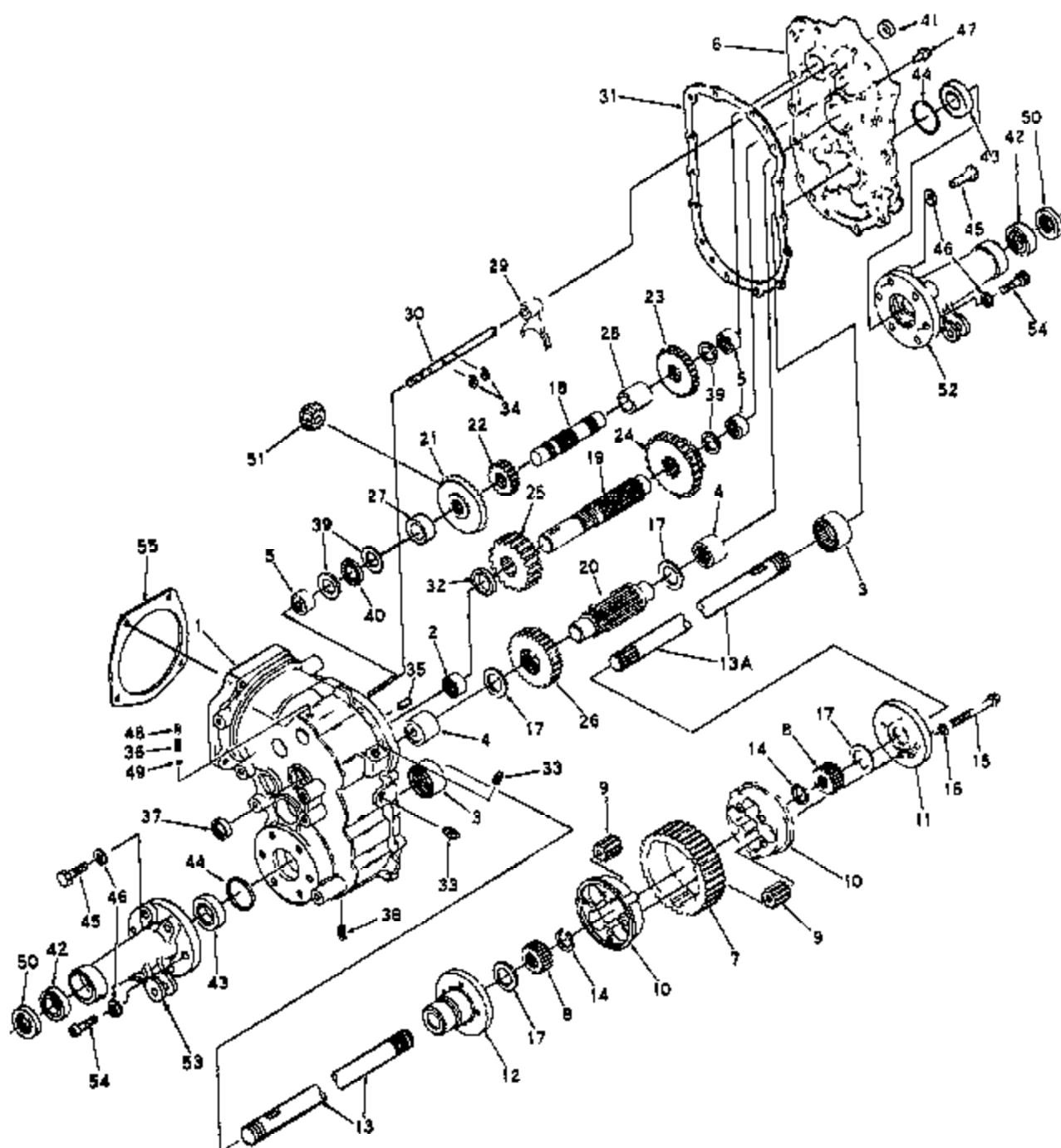


PARTS LIST

Ref. No.	Part No.	Quan.	Description
	121926	1	Steering Gear Assembly (incl. the Following)
1	443828	3	Nut, 5/8-18 Hex Jam
2	648063	1	Cover, Dust
3	648064	1	Bearing, Steering Column
4	502370	1	Steering Gear Housing Assembly
5	648060	1	Washer
6	648088	1	Ball Bearing and Cup Assembly
7	N.S.S.	1	Cam and Tube Assembly
8	648067	1	Washer, Belleville
9	546068	1	Plug, Steering Gear Adjustment
10	460024	1	Pin, 1/8 x 1/2 Cotter
11	443832	2	Nut, 3/4-16 Hex Jam
12	443124	1	Nut, 9/16-18 Hex
13	590243	1	Stud, Lever
14	513754	1	Lever Assembly
15	649033	1	Retainer, Oil Seal
16	549034	1	Oil Seal
17	471212	1	Fitting, 1/8 x 45° Grease

ILLUSTRATION 12

TRANSAXLE



PARTS LIST-ILLUSTRATION 12

Ref. No.	Part No.	Description
1	770060	Cass Assembly, Transaxle (incl. Nos. 2 thru 5)
2	780097	Bearing, Needle
3	780098	Bearing, Needle
4	780099	Bearing, Needle
5	780100	Bearing, Needle
6	770065	Cover Assembly, Transaxle (incl. 3, 4 & 5)
7	770064	Gear, Ring
8	778085	Gear, Ring
9	778086	Gear, Pinion
10	786054	Case, Body
11	774199	Carrier, Differential
12	774200	Carrier, Differential
13	774226	Axle, Left Hand
13A	774225	Axle, Right Hand
14	792092	Ring, Snap
15	792063	Screw, 3/8-16 x 0-5/16 Hex Hd
16	792011	Lockwasher, 3/8"
17	780101	Washer, Thrust
18	776118	Shell, Counter
19	776119	Shell, Brake
20	776120	Pinion, Output
21	778087	Gear, Bevel (30 teeth)
22	778088	Gear, Spur (16 teeth)
23	778089	Gear, Spur (20 teeth)
24	778100	Gear, Cluster (23 & 27 teeth)
25	778102	Gear, Spur (17 teeth)
26	778103	Gear, Output (33 teeth)
27	788055	Spacer
28	788056	Spacer
29	784195	Fork, Shift
30	784196	Rod, Shift
31	788047	Gasket, Case & Cover
32	780006	Spacer
33	792010	Plug, Pipe
34	792064	Ring, Snap
35	788028	Pin, Dowel
36	792003	Spring
37	788008	Seal, Oil
38	792019	Plug, Magnetic Drain
39	780045	Washer, Thrust
40	780012	Bearing, Thrust
41	788034	Seal, Oil
42	780103	Bearing, Ball
43	780104	Bearing, Thrust
44	788048	Seal, Square Cut
45	792065	Screw, 1/2-13 x 1-1/2 Hex Hd
46	792066	Lockwasher, 1/2"
47	792087	Screw, 5/16-16 x 1 Thrd Forming Hex Hd
48	792088	Screw, 1/4-20 x 1/2 Set
49	792004	Ball, Steel
50	786048	Seal, Oil
51	778083	Pinion, Bevel
52	782093	Housing, Axle
53	782040	Housing, Axle
54	792069	Screw, 1/2-13 x 1-1/2 Allen Hd Cap
55	788050	Gasket

ORDER REPLACEMENT PARTS FROM

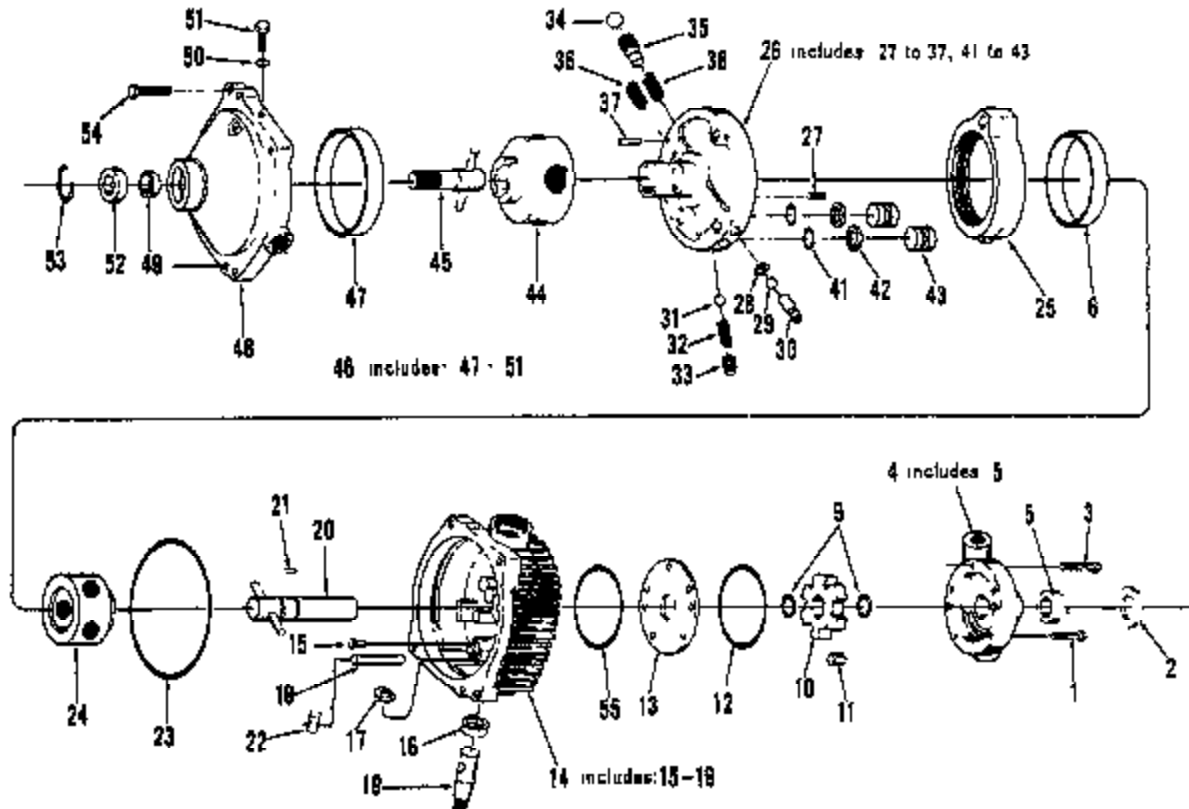
TECUMSEH PRODUCTS COMPANY

Lugan • Power Products Parts Depot Division

Gratton, Wisconsin

ILLUSTRATION 13

HYDROSTATIC TRANSMISSION - PART NO. 116425



Ref. No.	Part No.	Quan	Description
1	590257	4	Screw, 5/16-18 x 1-1/4 Hex Hd
2	548416	1	Shield, Brass
3	590256	1	Screw, 5/16-18 x 1-3/4 Hex Hd
4	501085	1	Body Subassembly, Charge Pump (incl. Ref 5)
5	546415	1	Seal, Oil Input Shaft
6	549376	1	Pump Race
7			
8			
9	548437	2	Ring, Snap Input Shaft
10	548509	1	Carrier, Charge Pump
11	548439	6	Roll, Charge Pump
12	549380	1	Seal, Square Cut
13	549436	1	Plate, Charge Pump
14	502567	1	Cover, Subassembly (incl. Ref. 6, 7 & 18-19)
15	549379	2	Cap
16	546415	1	Seal, Oil Control Shaft
17	601326	1	Washer, Control Shaft
18	601326	1	Dowel, .4377 Dia, Control Shaft
19	601326	1	Shaft Control
20	601085	1	Input Shaft Subassembly
21	548444	1	Pin, Drive Charge Pump
22	549377	1	Insert, Cam Ring (Steel)
23	549376	1	Seal, Ring Square Cut
24	502459	1	Rotor, Ball Subassembly
25	518769	1	Cam Ring
26	502445	1	Pintle, Subassembly (incl. Ref 27 to 37, 41-43)
27	549373	1	Pin, Coil
28	549372	2	Retainer, Directional Valve
29	549371	2	Ball, 5/16 Dia, Directional Valve
30	549363	2	Body, Directional Valve

• These Parts Included in Cover Service Kit No. 502567

Ref. No.	Part No.	Quan	Description
31	549370	1	Ball, 7/16 Dia. Charge Pressure Relief
32	549369	1	Spring, Charge Pressure Relief Valve
33	549368	1	Plug, Charge Pressure Relief Valve
34	549367	2	Ball, 5/8 Dia. Acceleration Valve Plug
35	549366	2	Valve, Acceleration
36	549365	2	Spring, Acceleration Valve
37	549363	1	Dowel, Acceleration Valve Plug
41	549369	2	Ring, "O" Ring Piston
42	549368	2	Ring, Backup Piston
43	549367	2	Piston, Pintle
44	502444	1	Rotor, Ball Subassembly Motor
45	502460	1	Shaft, Subassembly Output
46	518767	1	Body, Subassembly, Transmission Motor (incl. Ref. 47-51)
47	548356	1	Race, Motor
48	589733	1	Body, Motor
49	548893	1	Seal, Oil, Output Shaft
50	589734	1	Tube Fitting, O-Ring
51	502572	1	O-Ring Plug Subassembly
52	546443	1	Bearing, Ball, Output Shaft
53	548446	1	Ring, Snap, Output Shaft
54	590257	2	Screw, Cap, 5/16-18 Socket Head
55	549354	1	Seal, Square Cut

• These Parts Included in Charge Pump Kit No. 502564

This image shows a single sheet of white paper with horizontal ruling lines. The lines are evenly spaced and run across the width of the page. There is no text or other markings on the paper.

A Careful Operator

**IS THE BEST INSURANCE
AGAINST AN ACCIDENT.**

— NATIONAL SAFETY COUNCIL

JACOBSEN **TEXTRON**

Jacobsen Division of Textron Inc.